

# The Friends of the Fox Quarterly Newsletter



# Discovery

Friends of the Fox Mailing: P.O. Box 741, Appleton, WI 54912-0741

Winter 2012

Inside This  
Issue

2012 Annual Meeting

FWHP Fundraising

New Fund for Parkway

FWHP Economic  
Impact Plan

Schedule Community  
Input Meetings

"Unlock the Memories"  
Locktender Project

FWHP Folklorist~  
Traveling Museum

Historical Photos

Upper Fox River  
Research Volunteers

Rapide Croche  
Transfer Station

Navigational Lockage  
Statistics

Eureka Bridge Progress

FOF Newest Members

"Thank-You"  
to Our Sponsors

Membership Renewal

*Friends of the Fox asks you to Save This Date  
April 28, 2012 and Plan on Attending Our*

## *2012 Annual Meeting*

*To Be Held at the North Shore Golf Club in Menasha  
Mark Your Calendars for this Special Evening!!*

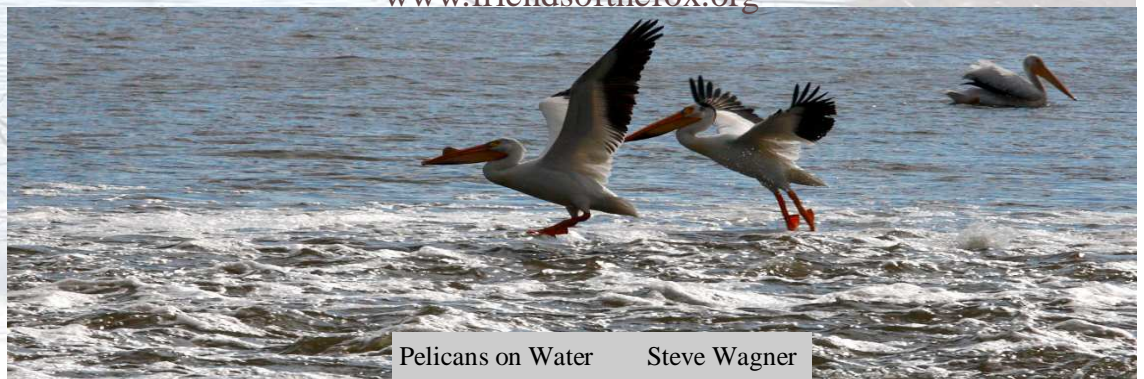
*Special Guest Speaker  
Secretary Paul Jadin*

*of the Wisconsin Economic Development Corporation  
Speaking on The Economic Impact of a Vibrant Waterway*

*If you are a Friends of the Fox Member...You have a Vote.  
If you are not a member, come see what all of the excitement is about.  
We will have a great time getting together with our Fox River  
enthusiasts and sharing the events, projects and other goals for 2012.*

*Come and Join the Fun!!!!*

*Watch our website for more details as they become available at:  
[www.friendsofthefox.org](http://www.friendsofthefox.org)*



Pelicans on Water

Steve Wagner



# Community Projects



## FOX-WISCONSIN HERITAGE PARKWAY FUNDRAISING



**GOAL**  
\$210,000

**RAISED TO DATE**  
\$200,800

## EXPLORE ~ ENGAGE ~ PRESERVE

The Fox-Wisconsin Heritage Parkway is a citizen-led effort. Their funding Comes entirely from the generous support of private donors who recognize the importance of their work to preserve the unique environmental and historical resources found along the Fox-Wisconsin Waterway.

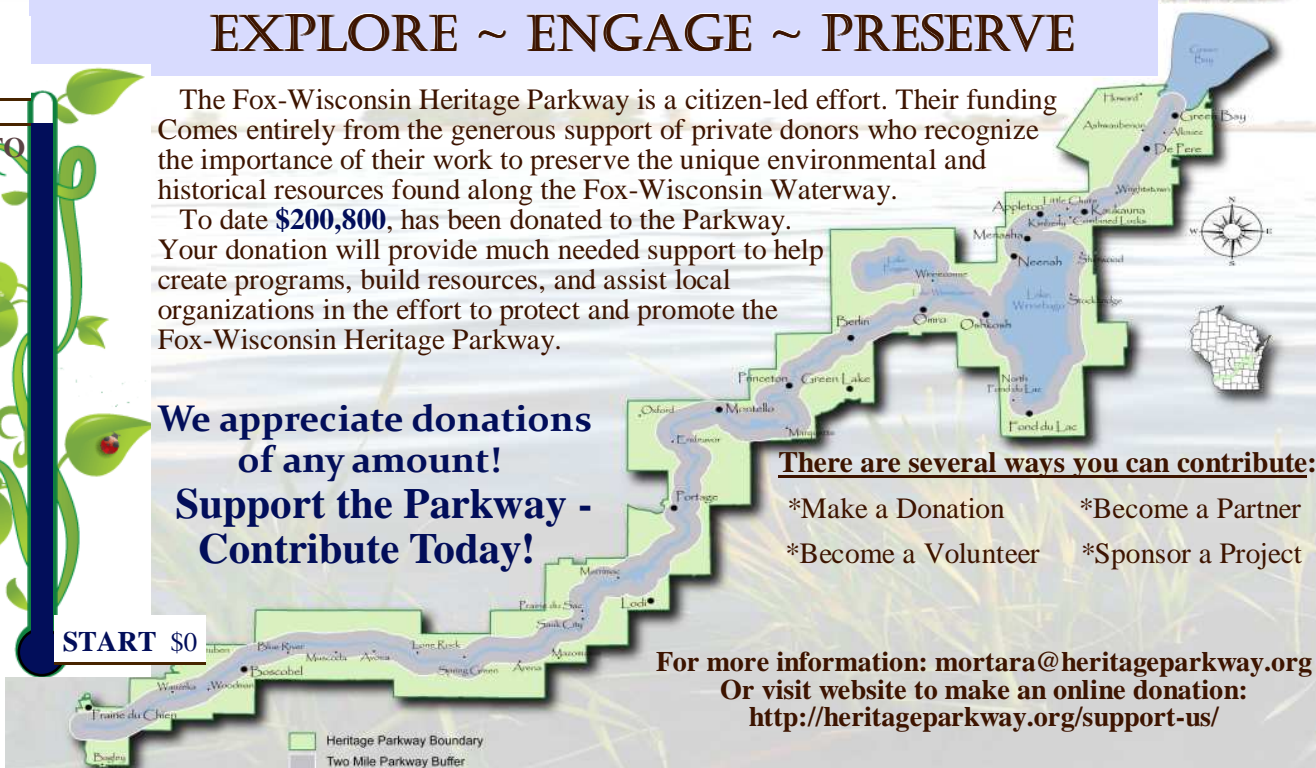
To date **\$200,800**, has been donated to the Parkway. Your donation will provide much needed support to help create programs, build resources, and assist local organizations in the effort to protect and promote the Fox-Wisconsin Heritage Parkway.

**We appreciate donations of any amount!**  
**Support the Parkway - Contribute Today!**

**There are several ways you can contribute:**

- \*Make a Donation
- \*Become a Partner
- \*Become a Volunteer
- \*Sponsor a Project

**For more information: [mortara@heritageparkway.org](mailto:mortara@heritageparkway.org)**  
**Or visit website to make an online donation:**  
**<http://heritageparkway.org/support-us/>**



*The Fox-Wisconsin Heritage Parkway is a 501(c)(3) organization. All contributions are tax deductible to the maximum amount allowed by law.*

## COMMUNITY FOUNDATION FOR THE FOX VALLEY REGION, INC. BEGINS FUND FOR PARKWAY



The Community Foundation for the Fox Valley Region, Inc. has started a fund for the Fox-Wisconsin Heritage Parkway.

**To contribute to this fund: [www.cffoxvalley.org](http://www.cffoxvalley.org)**

## FIRM HIRED TO CREATE PARKWAY ECONOMIC IMPACT PLAN

The Fox-Wisconsin Heritage Parkway is pleased to announce the hiring of Economic Development Partners, Inc. to complete an Economic Impact Plan. The Economic Impact Plan will compliment ongoing efforts to develop an Interpretive Master Plan for the Parkway by focusing on the economic revitalization and tourism development aspects of the region.



# Community Projects Cont.

Page 3

## PUBLIC COMMUNITY INPUT MEETINGS SCHEDULE February 11-16

*You're invited to attend one of the following public input meetings as we discuss how local communities can join the Fox-Wisconsin Heritage Parkway in protecting and preserving the Upper and Lower Fox and Wisconsin rivers in Wisconsin.*

**Date: Saturday, February 11**

Time: 10:00 a.m.

Place: Huckleberry's Restaurant  
1906 S Marquette Road (Hwy 18/35)  
Prairie de Chien, WI  
608-326-5488

**Date: Saturday, February 11**

Time: 3:00 p.m.

Place: Trader's Bar and Grill  
6147 US Hwy 14  
Arena, WI  
608-588-7282

**Date: Sunday, February 12**

Time: 2:00 p.m.

Place: Merrimac Village Hall  
100 Cook Street  
Merrimac, WI  
608-493-2122

**Date: Monday, February 13**

Time: 6:00 p.m.

Place: Montello City Hall  
20 Underwood Avenue  
Montello, WI  
608-297-2727

**Date: Tuesday, February 14**

Time: 5:30 p.m.

Place: Fond du Lac Public Library, McLane Room  
32 Sheboygan Street  
Fond du Lac, WI  
920-929-7080

**Date: Wednesday, February 15**

Time: 6:00 p.m.

Place: UW Extension  
625 E County Road Y  
Oshkosh, WI  
920-232-1970

**Date: Thursday, February 16**

Time: 6:00 p.m.

Place: Neville Museum  
210 Museum Place  
Green Bay, WI  
920-448-4460

Yummmm  
Mark Hoffman  
Photo

**Light Snacks Provided**

The Parkway will assist area communities in telling their unique river stories and help them to identify and promote their recreational, cultural and culinary attractions.

Information gathered through these public input sessions will help determine what services can be supported by local communities within the Fox-Wisconsin Heritage Parkway to enhance economic, tourism and heritage opportunities and generate collaborative private and public partnerships throughout the region.

**Clip schedule at left and plan on attending.**

**Everyone is welcome! Please Join Us!!!!**

*"The river is a flute,  
she dances and  
plays,  
she sings when she's  
happy,  
and when she's on a  
journey."*

*Unknown Author*





# Community Projects Cont.

## "UNLOCK THE MEMORIES" LOCKTENDER PROJECT

On September 24, 2011 the Fox-Wisconsin Heritage Parkway (FWHP) hosted "Unlock the Memories", a locktender reception held at the Paper Discovery Center in Appleton. The event was the culmination of a year-long historical research project into the lockmasters and their families who lived in the lock houses on the Fox River. The event drew 66 special guests - retired and current locktenders, their families and descendants, some dating from the 1880's.

The following 14 locktender families were represented:

Van der Wyst/de Jonge - Appleton 4  
 Malchow - Appleton 3 and 4  
 Gerarden - Appleton 4  
 Clark - Eureka  
 Burt - DePere  
 Wittman - Combined Locks  
 Allanson - Menasha  
 Zuehls - DePere  
 Coppus - DePere  
 Ratzman - Little Chute 2  
 Gallenberger - Appleton 1/Combined Locks  
 Oates - Little Kaukauna  
 Clark - Little Kaukauna  
 Wynboom - Cedars

As a special tribute 16 descendants representing 5 families who lived in the government houses at Appleton Locks number 1, 3 and 4 participated in the Fox-Wisconsin Heritage Paddle 2011. Their kayaks and canoes were "locked-through" the 4 Appleton locks..

As nepotism was common, several attendees were related to two or more generations of lockmasters.

The program began with Harlan Kiesow of the Fox River Navigational System Authority System educating the group on the history of the lock system and their locktenders, current restoration efforts and planned projects. Dan Reinhold gave a presentation about the Fox-Wisconsin Heritage Parkway and its efforts to preserve the history of the river.

Flanked by photos, members of locktender families shared their family's history by



telling stories about working and living at the locks to an attentive audience.

The September gathering, was funded by a mini-grant from the **Wisconsin Humanities Council** and kicked-off the Parkway's ongoing project to record the locktender stories.

By Christine Williams



*"The song  
 of the river  
 ends not  
 at her  
 banks  
 but in  
 the hearts  
 of  
 those who  
 have  
 loved her."  
 Buffalo Joe*

# Community Projects Cont.

## FOLKLORIST INTERVIEWS FOR TRAVELING MUSEUM

As part of this project, Mark Livengood a University of Wisconsin-Madison folklorist interviewed two retired lockmasters, two lockmaster's children and a current locktender in early December, 2011. Their stories, preserved in digital recordings, will be the first step in gathering the information needed to educate the public about this unique part of Wisconsin history and support the concept of a traveling museum exhibit to focus on the lives of locktenders on the Fox River.

In his final report, Livengood wrote, *"While I listened to and annotated the five interviews, it became clear that there was no single experience of the locks along the Upper and Lower Fox River. The people I interviewed described and told stories about different stretches of the Fox River at different times. Considered in relation to each other, the information - some complete narratives, others snippets of memory - represent a range of experiences that, together, can be used to tell a full story of the river's cultural heritage."*

Livengood also compiled a bibliography and recommended documenting the contemporary folk life of locktenders and others who work and live along the river.

**If you have information on locktender descendants, stories, newspaper articles, photos or would like to volunteer your time please contact:**

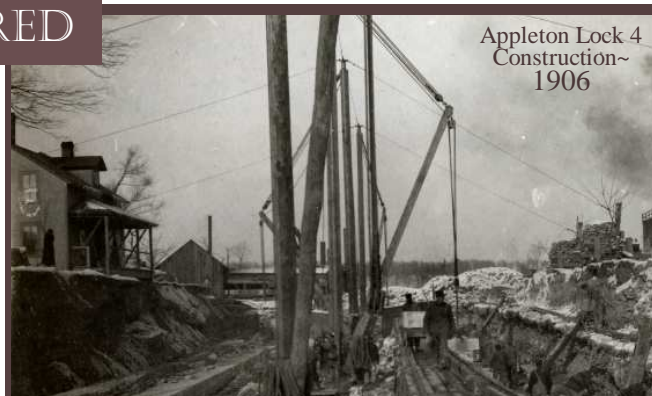
**Christine Williams - (920)749-0415 - [Williams@heritageparkway.org](mailto:Williams@heritageparkway.org)**

**Additional information about the locktender research project, a gallery of photos and the video recording of the event can be accessed through the FWHP website at: [www.heritageparkway.org/in-the-news-blog/locktenders](http://www.heritageparkway.org/in-the-news-blog/locktenders)**

## HISTORICAL PHOTOS UNCOVERED

Many photos have been collected by the families of the locktenders. However, nothing comes close to the magnitude of photos in the possession of Buck Clark. Buck's dad and grandfather were lockmasters at Little Kaukauna. Buck has hundreds of photos that his father saved from being thrown away by the Corps of Engineers office in the 1950s. In the past month these photos have been shown to the Wisconsin Historical Society and the Chief of History at the Council for Opportunity in Education (C.O.E.) office in Washington D.C. Both organizations are fascinated by the images that preserve the early history of the lock system and are continuing talks with the family to donate the collection.

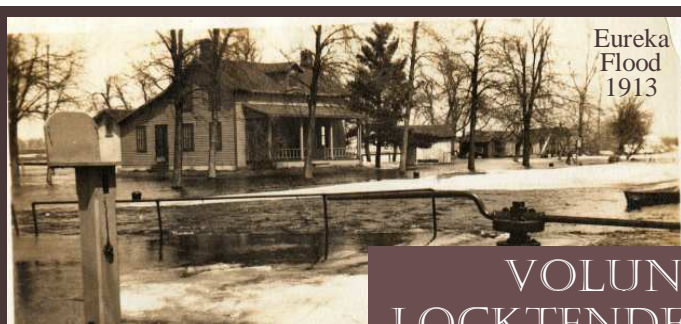
Written by Christine Williams



Appleton Lock 4  
Construction~  
1906



Grand River Lock  
1914



Eureka  
Flood  
1913

## VOLUNTEERS TO RESEARCH LOCKTENDERS ON UPPER FOX RIVER

A group of dedicated volunteers have graciously offered to donate their time to the Fox-Wisconsin Heritage Parkway to begin researching the locktenders on the Upper Fox River. Those individuals are Kathleen McGwin, Bobbie Lee Erdmann and Jerry Disterhaft.

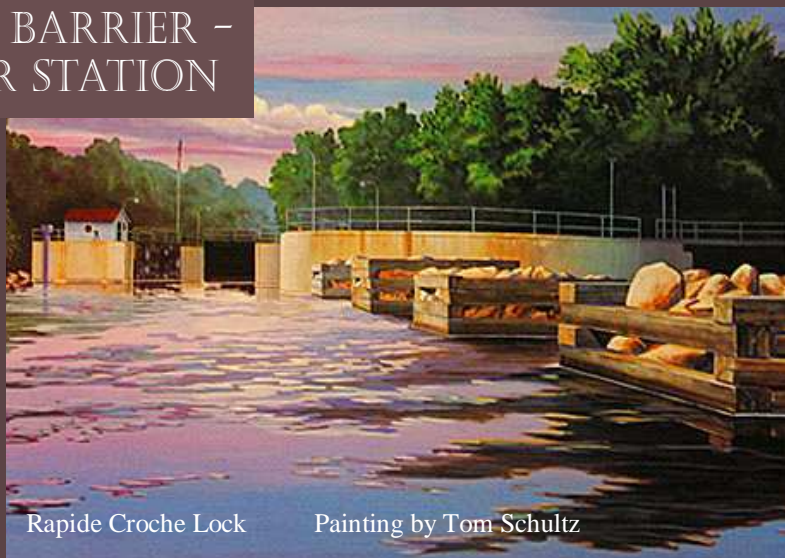


# Navigation

## AQUATIC INVASIVE SPECIES BARRIER – RAPIDE CROCHE TRANSFER STATION

The Fox River Navigational Authority is planning for a boat transfer station at the Rapide Croche Transfer Site. The Rapide Croche Lock was sealed in 1988 and will remain sealed to prevent sea lamprey and other aquatic invasive species (AIS) to migrate from the Great Lakes upstream to the Lake Winnebago system. The transfer system will include a method for lifting boats over the Rapide Croche barrier and cleansing the AIS before boats are placed upstream. Once the transfer station is in place it will allow recreational boaters access on the Fox River from Green Bay to Lake Winnebago. The proposed cost for transfer will be \$25 for boats under 26 feet and \$50 for larger crafts.

The transfer station at the lock site will consist of a solid 160 foot water proof barrier with a platform containing a 55'x 19' x 6' deep hot water basin and an inspection/spray basin. A fork lift and travel lift will transfer boats. Launch piers will allow passengers ingress and egress as well as temporary boat mooring. Canoe and kayak launch sites will



Rapide Croche Lock

Painting by Tom Schultz

be constructed both upstream and downstream of the station. Future plans include the possible construction of a visitor and AIS education center at the site to educate visitors of the history of the Fox River and the importance of preventing the spread of AIS. To date there has been a Boaters Survey and an engineering study of the Rapide Croche Lock. Information taken from [www.foxriverlocks.org](http://www.foxriverlocks.org)

*"When we try to pick out anything by itself, we find it hitched to everything else in the universe" John Muir*

Moving Through Lock  
Steve Wagner Photo

## 2011 Fox Locks General Navigation Season Statistics

2011	MENASHA	LITTLE KAUKAUNA	DEPERE	2011 TOTALS (Menasha, Kaukauna, DePere)	APPLETON (Locks 1-4)	CEDARS LOCK	2011 TOTALS (Appleton & Cedars)
Lockages	1396	738	1152	Lockages: 3286	68	43	Lockages: 111
Crafts	2167	1027	1723	Crafts: 4917	107	71	Crafts: 178
Passengers	8255	4351	6003	Passengers: 18609	369	255	Passengers: 624
Canoe & Kayak	151	29	51	Passengers: 231	119	7	Passengers: 126

**Fox River Navigational System Authority**

Phone: 920-759-9833

[www.foxriverlocks.org](http://www.foxriverlocks.org)



# Navigation Continued

Page 7

## PROGRESS ON THE EUREKA BRIDGE

The Eureka County "K" drawbridge is being replaced by a fixed span bridge in 2012. Recently, Mayor Schramer of Berlin found out that Winnebago County Highway Department intends to only raise the bridge clearance one foot over the existing closed structure. The Mayor informed Winnebago County that the City's resolution dated April 2009 called for a 10 foot clearance as compared to the Omro Highway 21 bridge center span and that the one foot additional clearance was not enough.

The City of Berlin stance is that the new bridge should not impede navigational traffic any more than the Omro bridge currently does. Berlin has invested considerable funds to improve the waterfront at Riverside park and in 2012 will be reconstructing the seawall in the downtown area. All these efforts are aimed at opening up the Fox River to boating traffic and making Berlin a navigation destination once again.

Making this possible were the efforts of the Berlin Boat Club which invested \$300,000 of private funds to rebuild the Eureka Lock which was completed on December 12, 2011 and will be open for the 2012 boating season. The success of the Berlin Boat Club's recent \$300,000 restoration of the Eureka Lock hinges on finding about two and a half more feet of clearance under the soon-to-be-built permanent bridge in Eureka. That's what boaters say they need to ply the waters of the Fox River unimpeded from Oshkosh to Berlin. But official plans for the bridge cut that clearance short.

*"The city of Berlin is asking that the bridge be re-engineered with the additional feet of clearance to avoid permanent harm to the city's economy",* said Mayor Dick Schramer. State, county and local officials are planning a meeting to discuss the matter. A date for the meeting has yet to be set.

There have been two meetings to try to resolve the clearance issue. It boils down to where measurements should be taken and how to translate that Omro clearance to the Eureka site. The Department of Natural Resources has volunteered to define the Ordinary High Water Mark (OHWM) at both sites to be used as a basis for determining the new Eureka site clearance. The OHWM

will take into account the increase in differential caused by the increased water flow rate during high water.

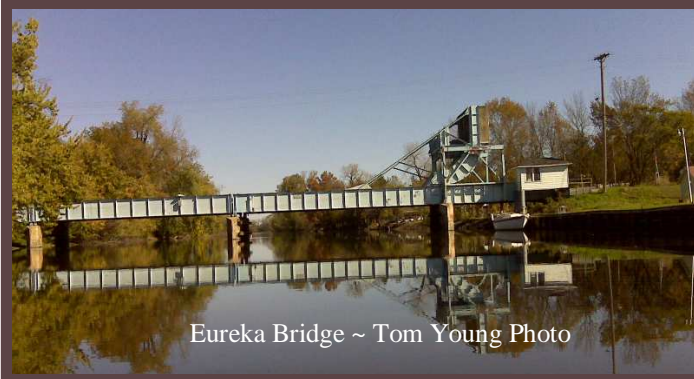
Winnebago County Highway Department's position is that it would be possible to redesign the new bridge but not without delaying the project and adding significant cost. The new design will increase the height of the bridge from 9' to 10'6". The water level will make a difference for large boats. At one point in the bridge the new design will allow 12' clearance. Due to the high expense of the engineering design, the age and deterioration of the bridge and the safety concern of the motorists, it is recommended that construction of the Eureka bridge be completed in 2012. Clearly both parties will have to meet in the middle to complete the project.

Deemed deficient, the bridge at Eureka was first selected for reconstruction in 2007. Originally, the work was to be completed in 2011 but delays pushed the project into 2012.

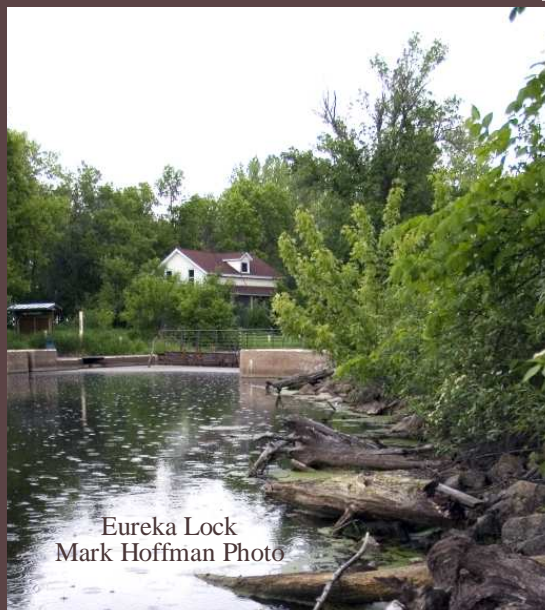
This past December and January, both the Berlin Boat Club and Winnebago County have taken measurements to try to establish the new height and found the numbers fluctuate due to different flow rates. By mid-February the clearance measurements should be established, whether or not Winnebago County will meet those numbers remains to be determined.

If the clearance requirements are not met, there will be some boaters that will not be able to navigate under the new Eureka bridge and make it through the restored Eureka Lock to Berlin. If the new bridge does not meet the clearance requirements, the local economy for upstream communities will be negatively impacted for many years to come.

**For Scheduled Meeting date: [www.cityofberlin.net](http://www.cityofberlin.net)**



Eureka Bridge ~ Tom Young Photo



Eureka Lock  
Mark Hoffman Photo



P.O. Box 741  
Appleton, WI 54912-0741

# Discovery

## *Our Mission and Purpose*

*The Friends of the Fox is a not-for-profit advocacy group established to preserve and develop the environmental, cultural, historical, economic and quality-of-life assets offered by the Fox River.*

*Please  
Renew Your  
Membership  
or Join Us  
Today -*



Warm Welcome to Our Newest Members

*Dallas Greetham Miriam Douglass*

"Thank You" For Your Generous Donations

*Jim Geerts*



### Enclosed Are My Membership Dues to Friends of the Fox

Sustaining Donor: \$25 \_\_\_\_\_ Gold Donor: \$50 \_\_\_\_\_ Platinum Donor: \$100 \_\_\_\_\_

\*\*\*Additional Donation \_\_\_\_\_

*If You are Receiving This Newsletter and Are Not a Member,  
Please Consider Joining by filling out form, enclosing dues and mailing to the below address.*

Friends of the Fox PO Box 741 Appleton, WI 54912-0741 Phone: 920-707-2065  
Name: \_\_\_\_\_ Address: \_\_\_\_\_  
Email Address: \_\_\_\_\_ Phone: \_\_\_\_\_

All contributions to the Friends of the Fox are tax deductible. Friends of the Fox is a 501-C3 not-for profit corporation.